

# Breeze

Cat. C

92% Wools of New Zealand / 8% Polyamide  
Flame retardant - 200.000 Martindale



60000



61126



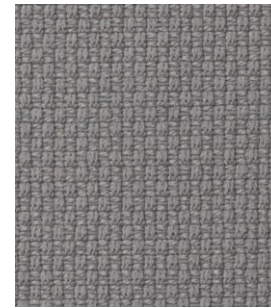
61003



61124



60074



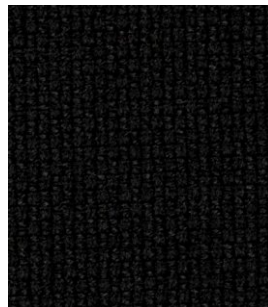
60033



60003



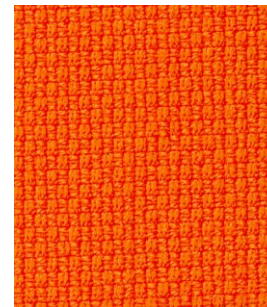
61060



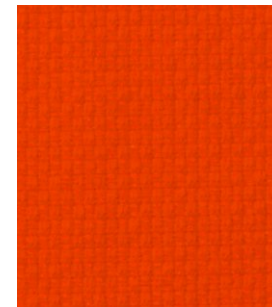
60999



62063



63016



64146



64119



64089



64058



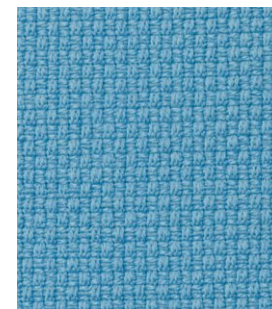
61125



65012



65077



66111



66075



66005



66112



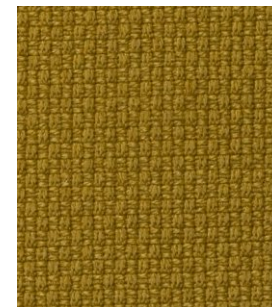
66127



68135



68133



68072



68134



68136



## Technical details

|                 |  |
|-----------------|--|
| Composition     | 92% Wools of New Zealand / 8% Polyamide  |
| Weight          | Gr. / ml. 640  |
| Abrasion test   | Martindale - UNI EN ISO 12947:2000<br>200.000 rubs   |
| Lightfastness   | Xenotest UNI EN ISO 105-B02: 5-7   |
| Flame retardant | BS 5852 Part 1 0,1 Cigarette & match<br>BS EN 1021 1&2<br>California Bulletin CAL 117-E-Class 1<br>CA TB 117-2013<br>BS 5852 Crib 5 (with treatment)<br>BS 7176 Medium Hazard (with treatment) |
| Environment     | EU Ecolabel<br>Oeko-Tex<br>100% free of heavy metals   |