

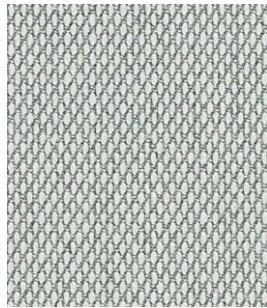
# Steelcut Trio 2

Cat. Extra

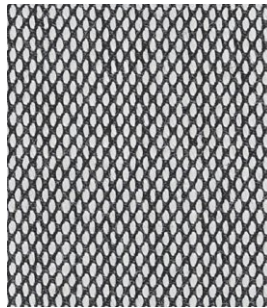
90% New wool worsted - 10% Nylon  
Flame retardant - 100.000 Martindale



105



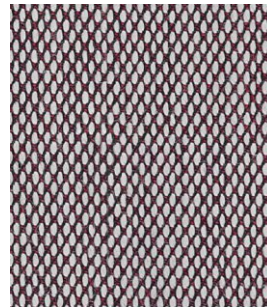
113



124



133



144



153



195



205



213



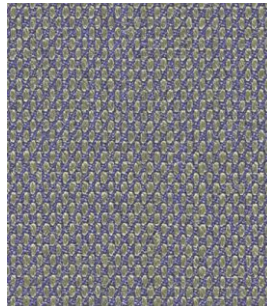
235



245



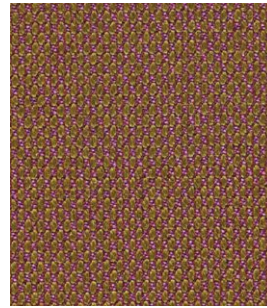
253



283



325



333



383



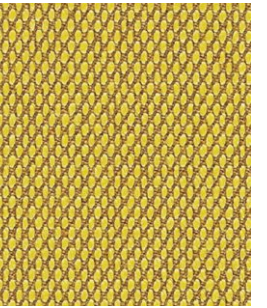
395



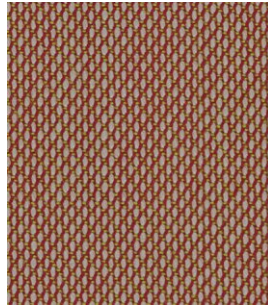
415



425



453



515



533



553



565



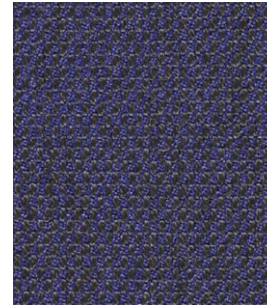
645



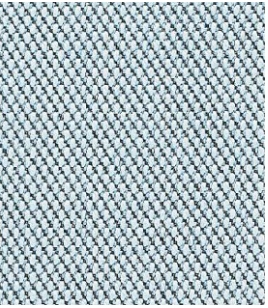
665



675



683



713



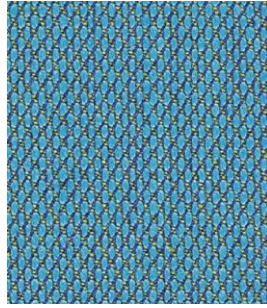
733



753



845



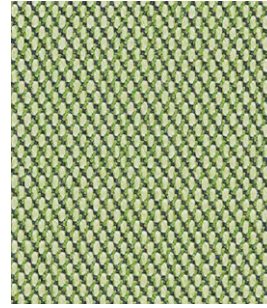
853



883



915



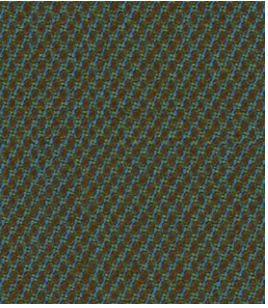
933



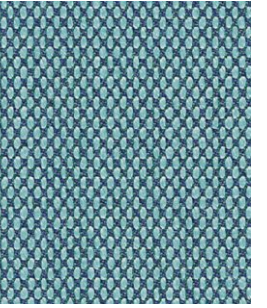
945



953



965



983



Technical details

Composition	90% New wool worsted - 10% Nylon
Weight	Gr. / ml. 770
Abrasion test	Martindale - UNI EN ISO 12947:2000 100.000 rubs
Lightfastness	Xenotest UNI EN ISO 105-B02: 5
Flame retardant	AS/NZS 3837, class 2 BS 5852 part 1 DIN 4102 B2 EN 1021-1/2 IMO A.652(16) NF D 60 013 NFPA 260 ÖNORM B1/ Q1 SN 198 898 5.3 with treatment UNI 9175 1IM US Cal. Bull. 117-2013
Environment	EU Ecolabel Reduced emissions