

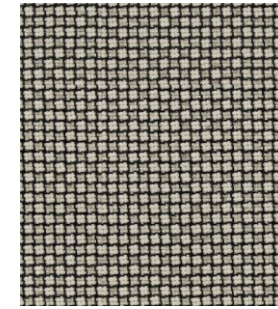
Colline

Cat. Extra

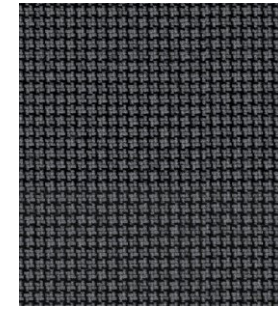
75% New wool worsted - 17% Acrylic - 8% Nylon
Flame retardant - 100.000 Martindale



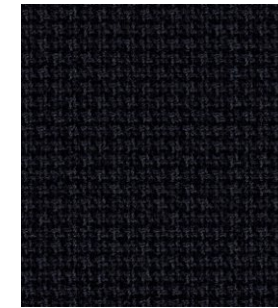
108



118



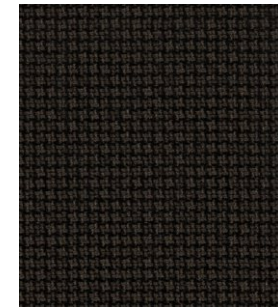
148



188



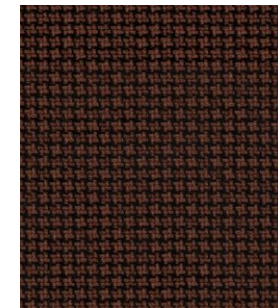
228



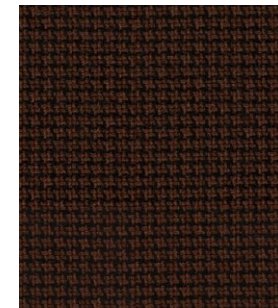
348



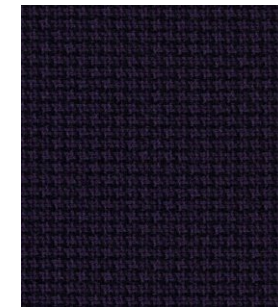
448



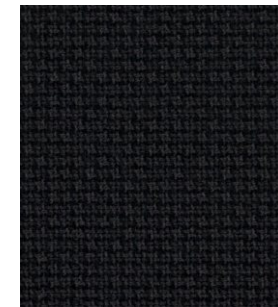
548



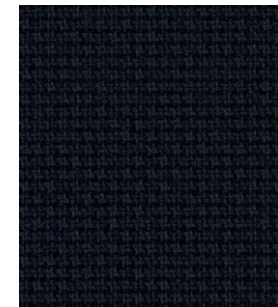
568



668



688



788

Technical details

Composition	75% New wool worsted - 17% Acrylic - 8% Nylon
Weight	Gr. / ml. 650
Abrasion test	Martindale - UNI EN ISO 12947:2000 100.000 rubs
Lightfastness	Xenotest UNI EN ISO 105-B02: 6
Flame retardant	AS/NZS 3837 BS 5852 Crib 5 with treatment DIN 4102 B2 EN 1021-1/2 IMO A.652(16) NF D 60 013 UNI 9175 1IM US Cal. Bull. 117-2013
Sustainability	Natural fibres / Sustainable resource