



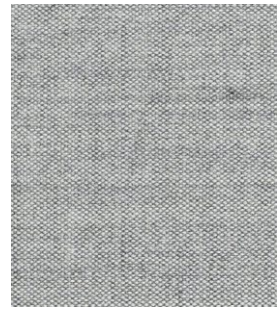
Remix 2

Cat. Super

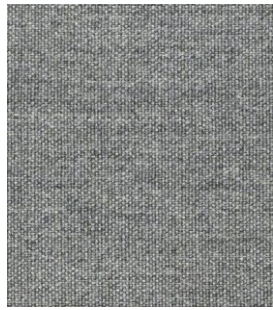
90% New wool worsted - 10% Nylon
Flame retardant - 100.000 Martindale



113



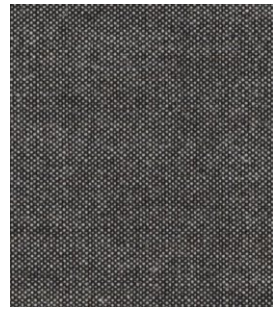
123



133



143



152



163



173



183



223



233



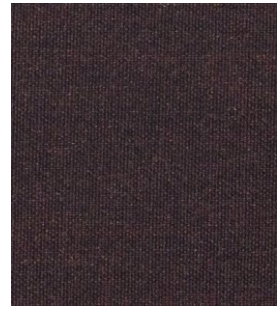
242



252



362



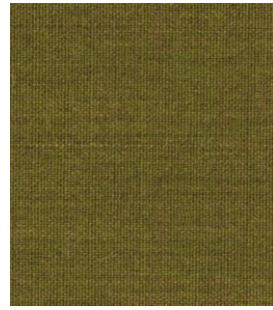
373



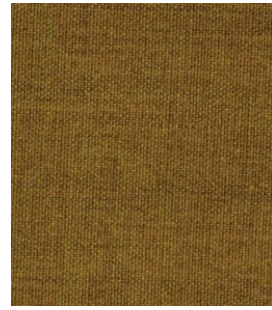
383



393



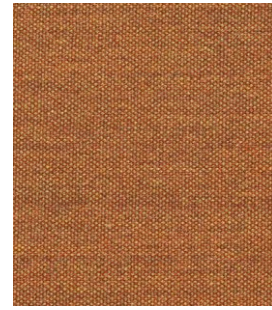
412



422



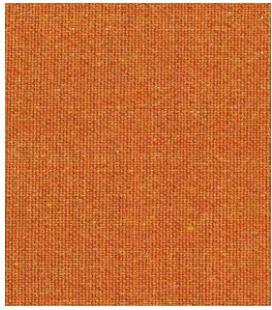
433



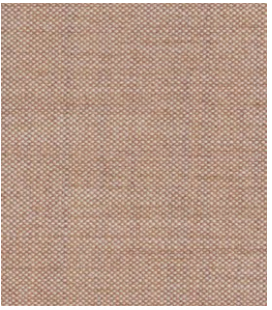
443



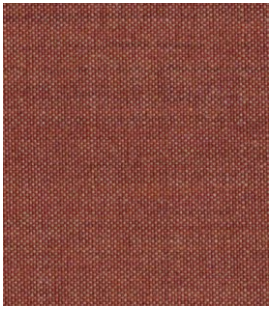
452



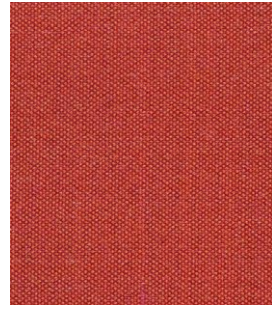
543



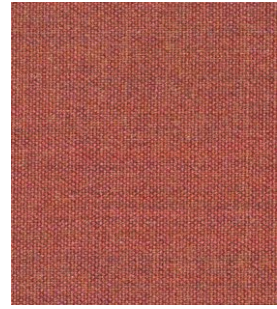
612



632



643



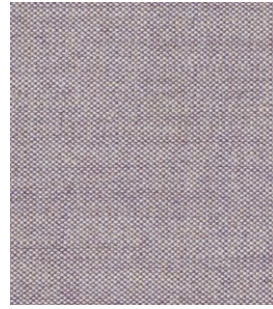
653



662



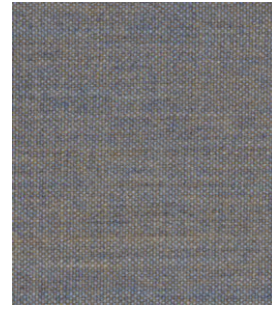
672



682



692



722



733



743



762



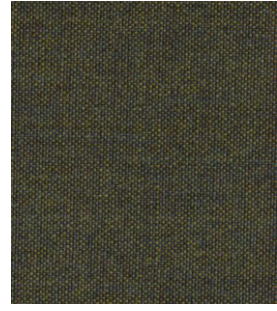
773



783



823



842



852



873



912



923



933



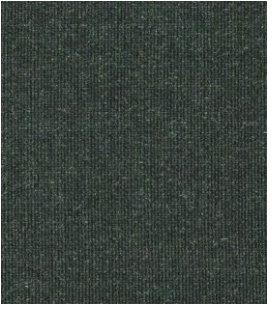
942



954



962



973



982

Technical details

Composition	90% New wool worsted - 10% Nylon
Weight	Gr. / ml. 415
Abrasion test	Martindale - UNI EN ISO 12947:2000 100.000 rubs
Lightfastness	Xenotest UNI EN ISO 105-B02: 5
Flame retardant	AS/NZS 1530.3 AS/NZS 3837, class 2 BS 5852 part 1 EN 1021-1/2 IMO A.652(16) NF D 60 013 NFPA 260 ÖNORM B1/ Q1 UNI 9175 1IM US Cal. Bull. 117-2013
Environment	Complies with EU ecolabel «The Flower»