

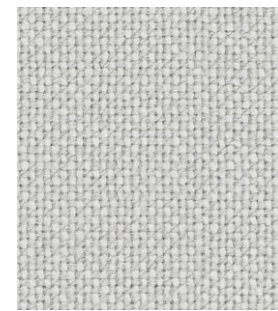
Hallingdal 65

Cat. Maxi

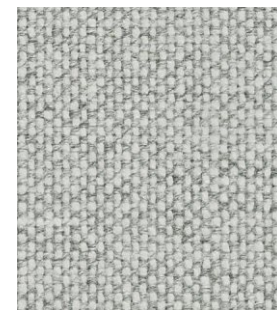
70% New wool - 30% Viscose
Flame retardant - 100.000 Martindale



100



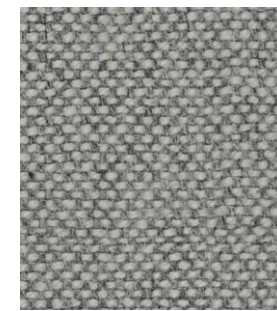
103



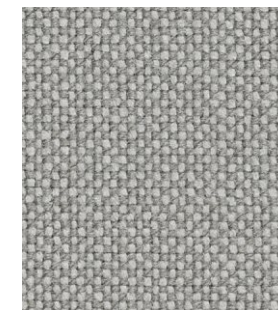
110



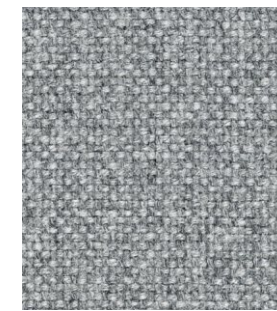
113



116



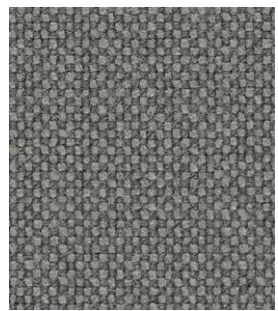
123



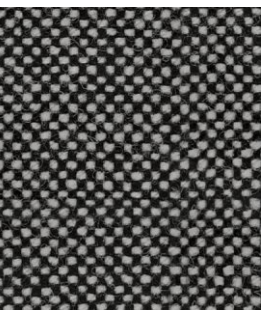
130



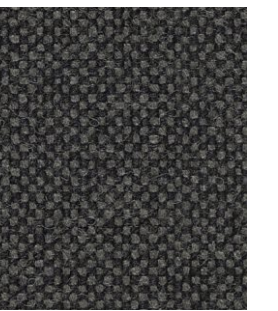
143



153



166



173



180



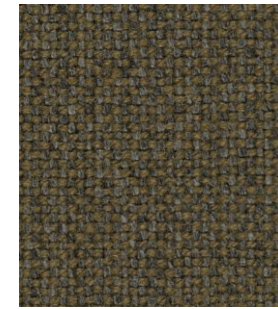
190



200



220



227



270



368



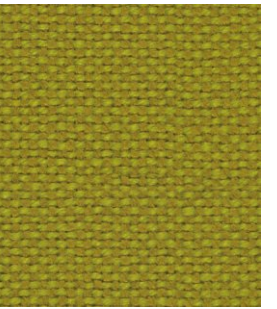
370



376



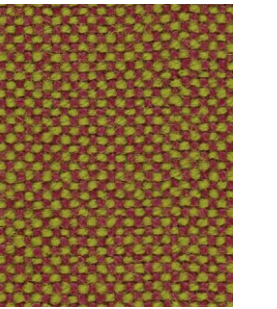
407



420



457



526



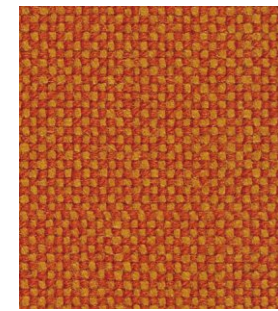
547



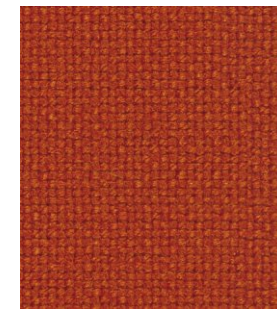
563



573



590



600



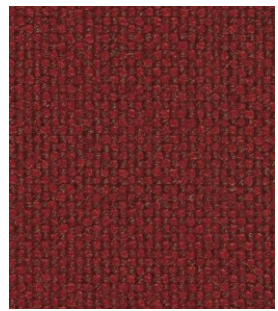
657



674



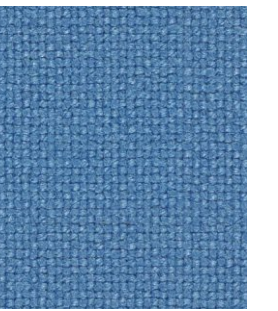
680



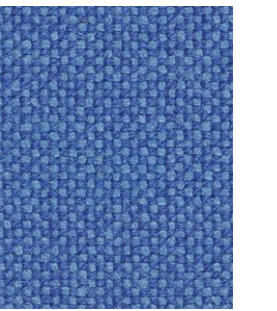
687



702



723



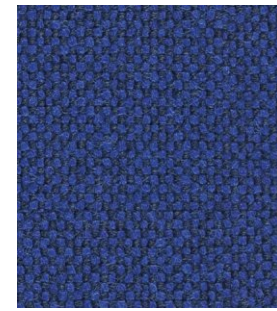
733



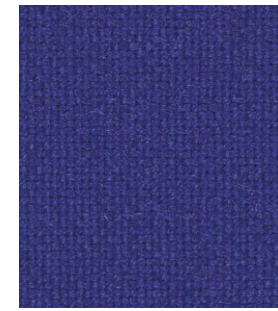
750



753



754



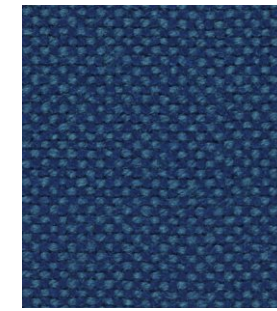
763



764



773



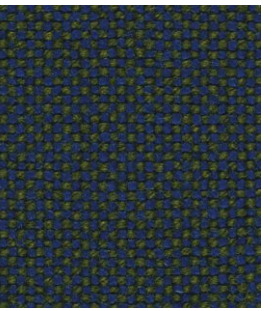
810



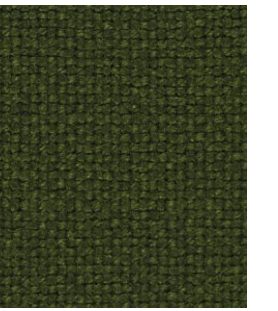
840



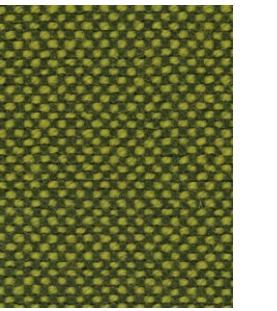
850



890



960



980

Technical details

Composition	70% New wool - 30% Viscose
Weight	Gr. / ml. 795
Abrasion test	Martindale - UNI EN ISO 12947:2000 100.000 rubs
Lightfastness	Xenotest UNI EN ISO 105-B02: 7
Flame retardant	AS/NZS 1530.3 AS/NZS 3837 BS 5852 Crib 5 BS 5852 part 1 DIN 4102 B2 EN 1021-1/2 IMO A.652(16) NF D 60 013 NFPA 260 ÖNORM B1/ Q1 SN 198 898 5.3 with treatment UNI 9175 1IM US Cal. Bull. 117-2013
Environment	Complies with EU ecolabel "The Flower»